



CP16#0199

O'Donnell, Mary Beth

From: Eric Eisemann <e_eisemann@e2landuse.com>
Sent: Tuesday, July 29, 2014 10:57 AM
To: Euler, Gordon, McCauley, Mark; Orjiako, Oliver; steve.stuart@ci.ridgefield.wa.us
Cc: 'Elizabeth Decker'
Subject: Tri-Mountain Golf Course
Attachments: Tri Mountain Parcel # v2.pdf

Gordy,
I appreciate the time you, Mark McCauley, and Oliver Orjiako took yesterday to meet with Steve Stuart and me.

During the meeting we discussed the possibility of Clark County moving the Tri-Mountain Golf Course and an abutting property into the Ridgefield Urban Growth Area. The properties in question, depicted on the attached map, would remain under County Park/Open Space designation and future County Park/Open Space zoning. Clark County will continue to operate and maintain Tri-Mountain Golf Course. Consequently, the proposed expansion would not alter the City's population and employment forecasts. The UGA expansion would not alter the current provision of capital facilities and services and inclusion of the Tri-Mountain properties into the City's UGA would allow Ridgefield to provide urban services more efficiently in the future. In addition, we understand that the County's proposal to include the Tri-Mountain Golf Course in the Ridgefield UGA could benefit Clark County's management and financing of the golf course.

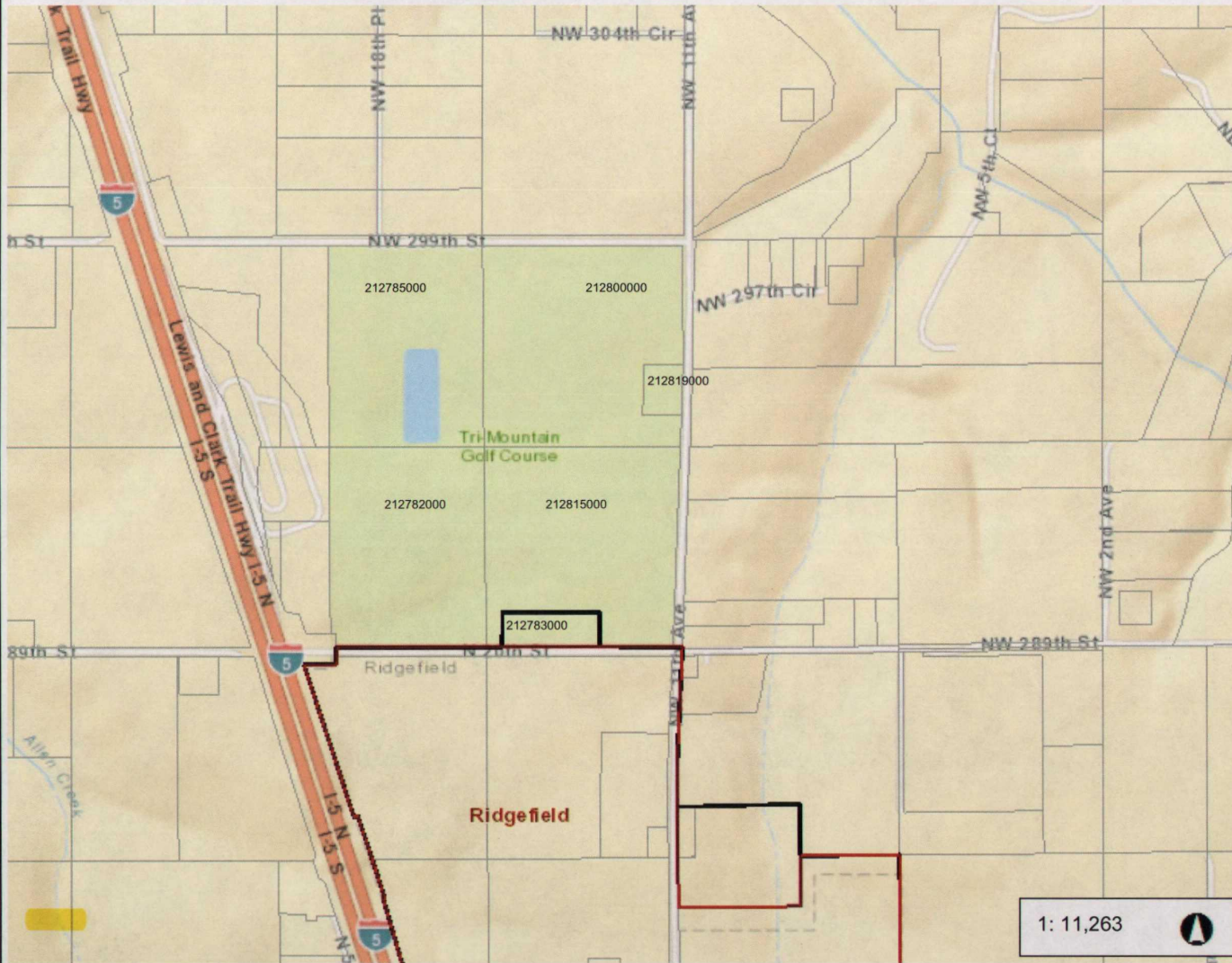
Consequently, the City of Ridgefield supports Clark County's proposal to add the Tri-Mountain complex into the Ridgefield UGA for Park/Open Space purposes.

Thank you,
Eric Eisemann
Ridgefield Senior Planning Consultant

Eric Eisemann
E2 Land Use Planning, LLC
215 W 4th Street, Suite # 201
Vancouver, WA 98660
360 750 0038
e_eisemann@e2landuse.com



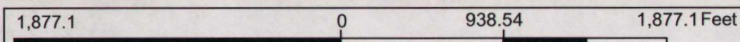
Tri Mountain Parcel



- Legend**
- Cities Boundaries
 - Urban Growth Area Boundary
 - Building Footprints
 - Taxlots
 - World Street Map

Notes:

1: 11,263



WGS_1984_Web_Mercator_Auxiliary_Sphere
 Clark County, WA. GIS - <http://gis.clark.wa.gov>

This map was generated by Clark County's "MapsOnline" website. Clark County does not warrant the accuracy, reliability or timeliness of any information on this map, and shall not be held liable for losses caused by using this information.